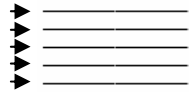


# NAMING LINES AND SPACES ON THE BASS CLEF STAFF

Name: \_\_\_\_\_

A STAFF IS MADE UP OF 5 LINES ...



AND 4 SPACES ...

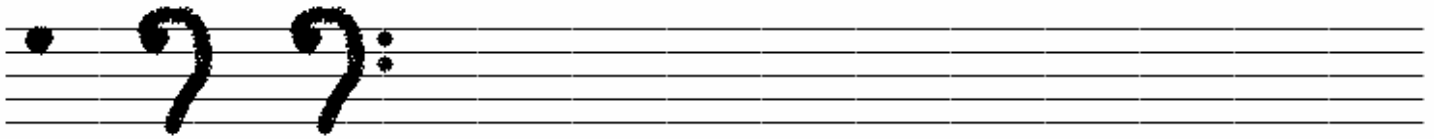


Band: \_\_\_\_\_

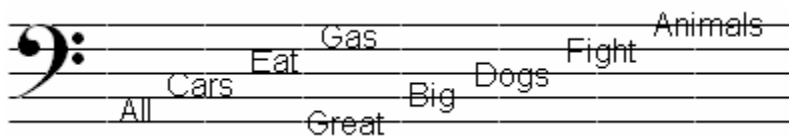
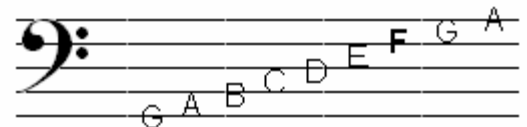
Slot #: \_\_\_\_\_

A CLEF IS PLACED AT THE BEGINNING OF A STAFF TO SHOW THE RANGE (HIGH OR LOW) THE MUSIC FOLLOWING IT WILL BE. THE BASS CLEF IS USED FOR MUSIC IN THE LOWER PITCH RANGE AND IT LOOKS LIKE THIS: : PRACTICE DRAWING THE BASS CLEF BELOW.

STEP 1    STEP 2    STEP 3    PRACTICE

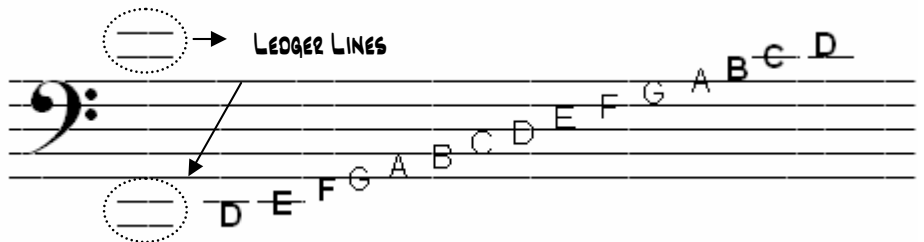


WE NAME EACH LINE AND SPACE OF THE BASS CLEF STAFF BY USING THE ALPHABET LETTER A THROUGH G IN ORDER. THE BASS CLEF ACTUALLY SHOWS US THE FIRST NOTE, WHICH IS AN F BETWEEN THE TWO DOTS. FROM THERE, WE GO UP OR DOWN WITHIN THE ALPHABET, STARTING OVER AT A AFTER WE GO TO G. IN ORDER TO REMEMBER THIS EASIER, THE FIRST LETTER IN EACH WORD OF THE SENTENCE "ALL CARS EAT GAS" SPELLS OUT THE SPACES AND "GREAT BIG DOGS FIGHT ANIMALS" SPELLS THE LINES.



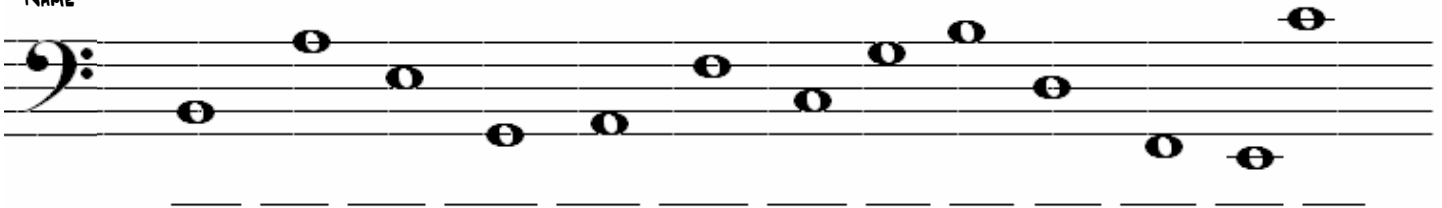
HOWEVER YOU CHOOSE TO REMEMBER THE NAMES IS YOUR CHOICE. EVENTUALLY YOU SHOULD HAVE ALL OF THE NAMES MEMORIZED WITHOUT THE NEED OF WORDS OR PHRASES.

IT IS POSSIBLE TO GO ABOVE AND BELOW THE STAFF USING LEDGER LINES. THE RULES REMAIN THE SAME, SIMPLY FOLLOW THE ALPHABETICAL ORDER FORWARD OR BACKWARD IN THE DIRECTION THE NOTES ARE GOING.



PRACTICE NAMING OR DRAWING THE NOTES ON THE STAFF BELOW. TRY NOT TO LOOK FOR THE ANSWERS UNTIL AFTER YOU'VE TRIED.

NAME \_\_\_\_\_



DRAW



F    A    C    G    E    B    D    G    A    C    B    D    D    C    E  
 (different)    (above the staff)    (below the staff)