

6th Grade Final Test Review


Name _____

About the test...

Band _____

- The test will be given _____
- You must use a pencil
- It is multiple choice (80 questions long)
- You may use one 3 x 5 note card of your own notes during the test (both sides)
- The following fill in the blank answers can be found on the internet at the Westwood Middle School Website (go to slpbands.com > Middle School > 6th Grade Band. Look under Worksheets and find Final Exam Review)

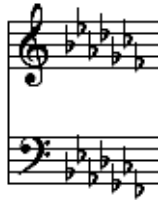
Fill in the blanks.

1. Time Signature 

Top number tells *how many beats are in the measure.*

Bottom number tells *what kind of a note gets one beat.*


2. Key Signature





The Key Signature tells which notes are *sharp* or *flat*.


3. List two ways to keep a steady beat.
- a) *Tap my foot*
 - b) *Watch the conductor*
4. List five things a responsible band student does when coming to band.
- a) *Gets instrument out*
 - b) *Checks the board for announcements*
 - c) *Arranges music in order*
 - d) *Warms up quietly*
 - e) *Locks up cases and lockers*

5. List two things a responsible band student does when leaving band.
- Takes time to put the instrument away properly***
 - Makes sure the stands and chairs are ready for the next band***

6. Draw a staccato marking under this note. 
- This marking tells us to play the note ***short*** and ***separated***.

7. Draw a curved line between these two notes. 
- Because they are the same pitch we call the line a ***tie***.
- These notes are played ***connected***.

8. Draw a curved line between these two notes. 
- Because they are different pitches we call the line a ***slur***.
- Is the second note tongued? ***NO***

9. This symbol  is an ***accent*** mark.

It means that the note should be played ***short, loud, separated and emphasized***.

10. Label each dynamic marking with its meaning.

- | | |
|----------------|---------------------------|
| a) forte | <i>loud</i> |
| b) piano | <i>soft</i> |
| c) mezzo forte | <i>medium loud</i> |
| d) mezzo piano | <i>medium soft</i> |

11. Label each tempo marking with its meaning.

- | | |
|---------------|---|
| a) Allegro | <i>Play at a fast, lively speed</i> |
| b) Allegretto | <i>Play lively, but not as fast as allegro</i> |
| c) Andante | <i>Play moderately slow and smooth</i> |
| d) Moderato | <i>Play at a medium speed</i> |

12. D.C. *al fine* means ***Go back to the beginning and play until "Fine"***

13. D.S. *al fine* means ***Go back to the sign and play until "Fine"***

1 2 (3 4) 1 2 3 4 + 1 + 2 3 4

20. Put the correct time signature in front of the following measures.

21. Name the following notes.

C F G D C Eb G Bb F A D A Eb A Eb C

22. Name three ways to best learn note names.

- Finger or position sticks for notes while saying the names in rhythm*
- Write in the note names below music before playing it*
- Count up or down the staff using the alphabet*

23. Name three ways to help you count better.

- Write the counts below the music*
- Speak the counts in rhythm*
- Tap my foot*

24. Name three things needed for the most beneficial practice.

- A firm chair*
- A music stand*
- No distractions such as TV or music*

25. What are some of the benefits of learning to read and play music?

- It helps us to be self-disciplined*
- According to studies it improves math scores*
- It improves listening skills*