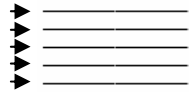


NAMING LINES AND SPACES ON THE TREBLE CLEF STAFF

Name: _____

A STAFF IS MADE UP OF 5 LINES ...



AND 4 SPACES ...

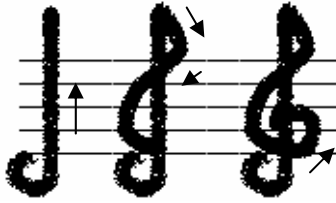


Band: _____

Slot #: _____

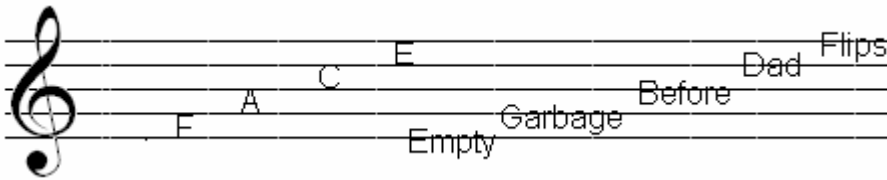
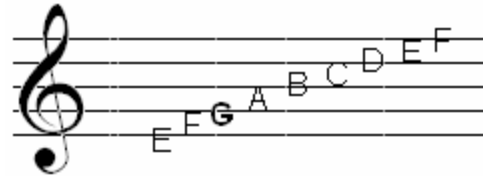
A CLEF IS PLACED AT THE BEGINNING OF A STAFF TO SHOW THE RANGE (HIGH OR LOW) THE MUSIC FOLLOWING IT WILL BE. THE TREBLE CLEF IS USED FOR MUSIC IN THE UPPER PITCH RANGE AND IT LOOKS LIKE THIS:  PRACTICE DRAWING THE TREBLE CLEF BELOW.

STEP 1 STEP 2 STEP 3 PRACTICE



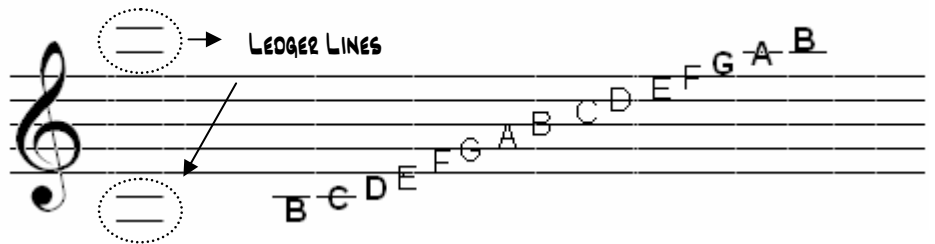
WE NAME EACH LINE AND SPACE OF THE TREBLE CLEF STAFF BY USING THE ALPHABET LETTER A THROUGH G IN ORDER. THE TREBLE CLEF ACTUALLY SHOWS US THE FIRST NOTE, WHICH IS A G RIGHT WHERE IT CURLS AROUND THE SECOND LINE FROM THE BOTTOM. FROM THERE, WE GO UP OR DOWN WITHIN THE ALPHABET, STARTING OVER AT A AFTER WE GO TO G.

IN ORDER TO REMEMBER THIS EASIER, YOU MIGHT REMEMBER THAT THE WORD "FACE" SPELLS THE NAMES OF THE SPACES AND THE FIRST LETTER IN EACH WORD OF THE SENTENCE "EMPTY GARBAGE BEFORE DAD FLIPS" SPELLS OUT THE LINES.



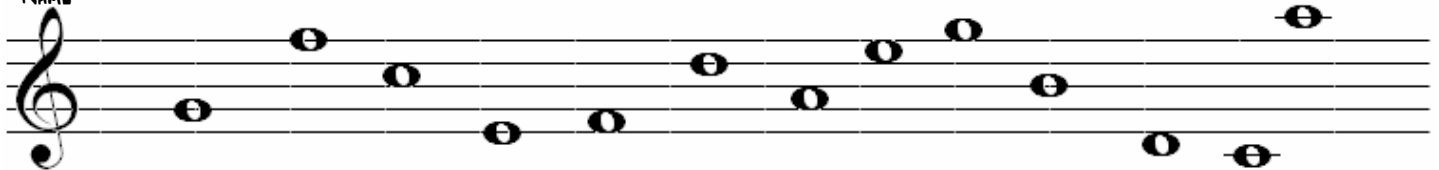
HOWEVER YOU CHOOSE TO REMEMBER THE NAMES IS YOUR CHOICE. EVENTUALLY YOU SHOULD HAVE ALL OF THE NAMES MEMORIZED WITHOUT THE NEED OF WORDS OR PHRASES.

IT IS POSSIBLE TO GO ABOVE AND BELOW THE STAFF USING LEDGER LINES. THE RULES REMAIN THE SAME, SIMPLY FOLLOW THE ALPHABETICAL ORDER FORWARD OR BACKWARD IN THE DIRECTION THE NOTES ARE GOING.

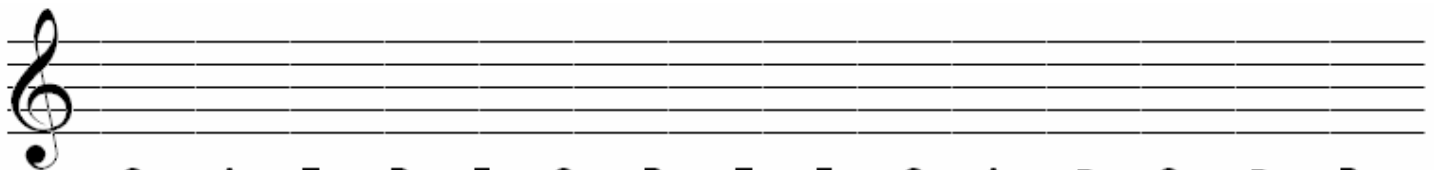


PRACTICE NAMING OR DRAWING THE NOTES ON THE STAFF BELOW. TRY NOT TO LOOK FOR THE ANSWERS UNTIL AFTER YOU'VE TRIED.

NAME



DRAW



G A E D F C B E F G A B C D B
 (different) (above the staff) (below the staff)